

Edgworth and District
Horticultural
Society



**2011 Annual Show
Schedule**



Saturday August 20
Barlow Institute
Edgworth

Public Viewing 2.30 – 4.00 p.m.

Prizes presented by Councillor Kate Hollern
Leader of Blackburn with Darwen Borough Council
at 4.15 p.m.

Contents

ESSENTIAL INFORMATION.....	3
A MESSAGE FROM THE CHAIRMAN.....	4
CUPS AND TROPHIES.....	5
PRIZE MONEY.....	6
JUDGES.....	6
VEGETABLES AND FRUIT.....	7
ROSES.....	9
DAHLIAS.....	9
OTHER CUT FLOWERS.....	10
HOUSE OR CONTAINER PLANTS.....	10
FLORAL ART.....	11
COOKERY - Recipe for Class 149.....	11
COOKERY.....	12
EGGS.....	12
PHOTOGRAPHY, ART AND CRAFTS.....	13
JUNIOR SECTIONS.....	14
Junior Floral Art.....	14
Junior Cookery.....	14
Junior Art.....	14
Junior Craft.....	15
Junior Photography.....	15
Junior Gardening.....	15
RULES.....	16
COOKERY SHOW TIPS.....	28
TIPS FOR EXHIBITING FLOWERS, FRUIT and VEGETABLES.....	29
ENTRY FORM.....	30
ENTRY FORM.....	31

Please read 'Essential Information' (p.3) and 'Rules' (p.16) before entering

There are new classes in several sections. Look for the icon



Copies of the Show Schedule and extra Entry Forms can be downloaded from our web site:

www.edgworth-horticultural-society.co.uk

ANNUAL SHOW

ESSENTIAL INFORMATION

EXHIBITORS

- The Show is open to all exhibitors, whether members or not.
- **Novice classes** are for exhibitors who have not won a First Prize in the Novice or Open classes for that type of exhibit.
- **Open classes** are open to all exhibitors, whether novice or non-novice.

Entry Procedure

- Official entry forms (see p.30) must be used.
- Entry fees per exhibit are:- Adults: 20p; Juniors: 10p.
- **If you do not want your exhibit to be sold for Society funds at the end of the Show, please say so when you submit your entry (see Rule 15).**
- The Institute will be open to accept completed entry forms 7.30 p.m.- 8.20 p.m. on the Friday before the Show, and 9.00 a.m. - 11.40 a.m. on the Saturday of the Show.
- Use the extra entry form (p.30) to keep a copy of your entries to help while staging.
- The supplied exhibitor cards must be placed face down by or under your staged exhibit.
- The staging room for preparation of horticultural exhibits will be open 7.30 p.m. - 8.25 p.m. on the Friday, and 9.00 a.m. – 11.45 a.m. on the Saturday.
- **Please stage your exhibits early. All exhibits must be in place and all exhibitors must have vacated the exhibiting areas by 8.30 p.m. on the Friday and by 11.50 a.m. on Show Saturday.**

Judging

Judging commences promptly at 12 noon on the Saturday. Only Judges and Show Officials may be present.

Collection of Prize Cards

- 4.00 – 4.10 p.m. on Show Day.
- Any cards remaining on the tables after 4.10 p.m. will be collected by the stewards for safekeeping in the Stewards' Office.

Collection of 'R' exhibits

Please collect your 'R' exhibits (see Rule 15 on p.16) after the presentation of prizes.

Prize Money

To be collected at the end of the Show from the Stewards' Office. Unclaimed prize money remains in the Society funds.

PUBLIC VIEWING ON SHOW DAY 2.30 p.m. – 4.00 p.m.

Admission

£1 Children under 16 FREE.

Refreshments

Available in the Institute café 2.30 – 4.00 p.m.

Prizes

Trophies and prizes will be presented at 4.15 p.m.

Raffle

The raffle is in aid of a charity nominated by the presenter, who will draw the winning tickets during the 4.00 – 4.15 p.m. interval.

Sale of Produce

Produce will be sold in aid of Society funds after the collection of 'R' exhibits. See Rule 15.

A MESSAGE FROM THE CHAIRMAN

As your new Chairman, it gives me great pleasure to welcome everyone to our 2011 Annual Show. I am particularly fortunate in following such an able Chairman as Barbara Kenny who has done so much over the last few years to develop the Society and the Show. With your support I trust that we can build upon that success.

Despite the last winter being one of the coldest for many years, I hope you will still be able to bring an abundance of flowers, vegetables and fruit to the Show. Our Show of course is not just for gardeners, it also has classes for floral art, cookery, photography, art and crafts.

If you have not entered before, please have a go. You will find us a helpful and friendly Society more than willing to assist you. Many years ago, I suggested that we introduced **novice classes** into the Show in order to encourage inexperienced exhibitors and there are now many such classes.

What's new?

1. **Increased Prize Money.** Prize money has been increased to help offset some of the costs incurred by exhibitors. However, if you choose not to take your prize money, it will be of course donated to Society funds.
2. **Rosettes.** The Committee has agreed to my suggestion that we give each cup winner a rosette which they will be able to permanently keep (unlike the cups!).
3. **Junior Gardening.** We have been remiss in the past in never having had Junior Gardening classes in our Show but this has now been rectified.
4. **The Westworth Cup.** A new cup called The Westworth Cup will be awarded to the winner of Junior Gardening. Please encourage your youngsters to enter. The Society is indebted to the Coles family who have kindly offered to donate this cup in memory of their relative Nancy Westworth, who sadly passed away earlier this year, and of her late husband Walter who was a founder member when the Society was reformed in 1973. Both were stalwarts of the Society.
5. **Hanging Basket Competition.** Members of the Society will find with their Schedule an entry form, rules and guidance for a new Hanging Basket Competition. Your Committee accepted my suggestion that, in order to overcome the difficulties of bringing your basket to the Show, we will instead visit you to judge your basket in situ at the end of July. This is a free to enter competition with a prize of £5 and a rosette to the winner who will be announced at the Show.

Finally, I wish to thank the advertisers in our Schedule who help to subsidise the cost of printing this Schedule and also I thank the Committee and volunteers who put in an enormous amount of time and energy to ensure our Show is a success.

I look forward to meeting you at the Show.

Barry Scanlon, Chairman 2011.

SHOW SECRETARY

If you have any questions about the Annual Show, please contact

Show Secretary David Spencer

Tel: 01204 307 897

Email: show@edgworth-horticultural-society.co.uk

For other Horticultural Society contacts, please see Page 13

CUPS AND TROPHIES (to be held for 12 months)

Points are awarded as follows:-
5 for FIRST prize; 3 for SECOND prize; 1 for THIRD prize

Trophies for the most points in the following classes:

JUNIOR SECTION

Classes

JUNIOR FLORAL ART	(191-200)	Junior Floral Art Trophy (donated by Mr W Scarlin)
JUNIOR COOKERY	(201-210)	Junior Cookery Trophy (donated by Mr W Scarlin)
JUNIOR PHOTOGRAPHY, ARTS AND CRAFTS UNDER 6	(211-215; 226-230;241-245)	Junior Arts and Crafts under 6 Trophy (donated by Mr W Scarlin)
JUNIOR PHOTOGRAPHY, ARTS AND CRAFTS 6-15	(216-225; 231-240;246-255)	Junior Arts and Crafts Trophy (donated by Mr W Scarlin)
JUNIOR GARDENING	(261-280)	The Westworth Cup (donated by the Coles family)
OVERALL JUNIOR	(191-280)	The Readey Cup (donated by Readey's Sports Cups and Trophies)



NOVICE TROPHY

(all adult novice classes)

The Bibby Cup
(donated by Mr & Mrs PH Bibby)

OPEN SECTION

VEGETABLES AND FRUIT	(16-45)	The Whitehead Cup (donated by Mr & Mrs W H Whitehead)
ROSES	(51-60)	The Bell Rose Bowl (donated by Mr & Mrs J C Bell)
DAHLIAS	(66-80)	The Richardson Cup (donated by Mr & Mrs K C Richardson)
OTHER CUT FLOWERS	(91-100)	The Society Cup (donated by The Horticultural Society)
HOUSE AND/OR CONTAINER PLANTS	(106-115)	The Greenthorne Cup (donated by Mr & Mrs G W Sutcliffe)
FLORAL ART	(121-130)	The Mowat Cup (donated by Mr & Mrs G Mowat)
COOKERY	(146-165)	The Crowthorne Cup (donated by Mr & Mrs A Sadler)
PHOTOGRAPHY, ARTS AND CRAFTS	(176-190)	The Parish Council Cup (donated by North Turton Parish Council)

Trophies for the best exhibits

JUNIOR	The Stuart Cup
VEGETABLES	The Richard Holland Memorial Cup
NOVICE VEGETABLE	The Peter Coates Trophy
FLOWERS	The Elisabeth Van Dijk Memorial Cup
PHOTOGRAPHY, ART AND CRAFT	The Kenyon Cup (donated by Pat and Geoffrey Whalley)
COOKERY	The Simpson Cup (donated by Mr S Simpson)

Trophies for the most points in open adult classes

LADY'S OPEN CUP	The Leicester Cup (donated by Mr & Mrs C Leicester)
GENTLEMAN'S OPEN SHIELD	The Hepburn Shield (donated by Mr & Mrs N G Hepburn)

PRIZE MONEY

The prize money for all classes, except Novice and Open Floral Art, is:

1st PRIZE	£1	2nd PRIZE	50p	3rd PRIZE	30p
-----------------------------	-----------	-----------------------------	------------	-----------------------------	------------

Floral Art (Novice and Open)

1st PRIZE	£1.50p	2nd PRIZE	£1.00	3rd PRIZE	50p
-----------------------------	---------------	-----------------------------	--------------	-----------------------------	------------

JUDGES



Flowers and Plants	Mr Harry Ackers
Roses and Dahlias	Mr Harry Hughes
Vegetables	Mr Peter Coates
Floral Art and Junior Floral Art	Mrs Gillian Platt
Cookery and Junior Cookery	Mrs Janet Evans
Crafts and Junior Craft	Mrs Joyce Read
Art and Junior Art	Mr Harry Hughes
Photography	Mr Vic Pigula

The Society thanks the judges for their generous support

SCHEDULE LISTING

Note that the identifying class number and the required number of exhibits within certain classes may have changed from previous schedules.

New classes are indicated by an icon. 

	<p>It would be helpful if the variety of vegetables, flowers or plants were named (if known). This is <i>for the information of the public only and will not in any way affect the judging.</i></p>	
<p><i>Turnip Snowball</i></p>	<p>Variety cards are available if required</p>	<p><i>Bit heavy for throwing!</i></p>

VEGETABLES AND FRUIT

Novice Section

Classes 1-15

- | | | | |
|-----|-------------------------------|--|---------|
| 1. | Dish of fruit | Of the same type | |
| 2. | Potatoes | Of the same variety | 2 |
| 3. | Tomatoes | Of the same variety | 2 |
| 4. | Runner beans | | 2 pods |
| 5. | French beans | | 2 pods |
| 6. | Broad beans | | 2 pods |
| 7. | Peas | | 2 pods |
| 8. | One variety of root vegetable | Tops trimmed to approx 75 mm / 3" | 2 roots |
| 9. | Onions from sets | Tops cut to approx 75 mm / 3" and tied, and roots neatly trimmed back to basal plate | 2 |
| 10. | Courgette | 100-200 mm (approx 4"-8") in length, or, if round cultivars, approx 75 mm / 3" in diameter | 1 |

***Not sure where your entries belong?
Bring them along
and
Ask the Stewards!***

Open Section**Classes 16-45**

16	Dish of gooseberries	Any one variety	
17	Dish of currants	Any one variety	
18	Dish of any other soft fruit	Any one variety	
19	Dish of any other fruit not in classes 16-18	Any one variety	
20	Potatoes	Of the same variety	5
21	Tomatoes – 1 truss	At least 50% to be ripe	1
22	Tomatoes – medium and large	Of the same variety; greater than 35mm in diameter	3
23	Tomatoes – small fruited	Of the same variety; no more than 35mm in diameter	3
24	Runner beans		5 pods
25	French beans		5 pods
26	Broad beans		5 pods
27	Peas		5 pods
28	Carrots	As Class 8.	3
29	Beetroot	As Class 8.	3
30	Chillies	Of the same variety, with stalks	3
31	Cucumber		1
32	Cabbage	Approx 75mm/3" of stalk/root remaining	1
33	Cauliflower	Approx 75mm/3" of stalk/root remaining; leaves trimmed level with curd	1
34	Onions from seed	As Class 9.	3
35	Shallots	As Class 9.	5
36	Onions from sets	As Class 9.	3
37	Courgettes	As Class 10.	3
38	Lettuce	Shown with roots	1
39	Three distinct kinds of vegetable	One of each	
40	One vegetable	Any other kind not in classes 21-38	1

Novelty Vegetables - Open

41	Oddest shaped vegetable from my garden	1
42	Heaviest Potato	1
43	Longest Runner Bean	1

ROSES

Novice Section

Classes 46-50

46	Large-flowered Rose (Hybrid Tea)	1 Stem
47	Cluster Rose (Floribunda)	1 Stem

Open Section

Classes 51-60

51	Large-flowered Roses (Hybrid Tea) (one or more varieties)	2 Stems
52	Large-flowered Rose (Hybrid Tea)	1 Stem
53	Cluster Roses (Floribunda) (one or more varieties)	2 Stems
54	Cluster Rose (Floribunda)	1 Stem
55	Cycle of bloom (same variety of Large Flowered Rose): bud, exhibition and blown in one vase. Must be on different stems.	3 stems
56	Any other type of rose other than classes 51-55	1 Stem

What is a 'Cycle of Bloom'? (Class 55)

3 separate stems:

- One bloom at the 'bud' stage, with one or two petals beginning to unfurl
- One bloom half to three-quarters open
- One in 'full bloom', with petals arranged symmetrically in a circular outline; stamens showing

DAHLIAS

Measuring rings will be available.

Novice Section

Classes 61-65

61	Any single Dahlia	1
----	-------------------	---

Open Section

Classes 66-80

66	Pompom Dahlia (not exceeding 52mm in diameter)	1
67	Miniature Dahlia (not exceeding 115mm in diameter)	1
68	Small Ball Dahlia (not exceeding 170mm in diameter)	1
69	Small Decorative Dahlia (not exceeding 170mm in diameter)	1
70	Small Cactus Dahlia (not exceeding 170mm in diameter)	1
71	Medium Dahlia (not exceeding 220mm in diameter)	1
72	Waterlily Dahlia (any size)	1
73	Collerette Dahlia (any size)	1
74	Dahlia, any type other than classes 66-73	1
75	Vase of Dahlias, all of the same type	3

Vases for Flowers – see Rule 9

Vases supplied by the Society for flower display are in 3 sizes

The Society provides packing paper for the flowers and you are strongly encouraged to use it.

OTHER CUT FLOWERS

Novice Section	Classes 81-90
81 Sweet Peas (one or more varieties)	3
82 Gladiolus, single spike	1
83 Best single bloom on show day (excluding Roses, Dahlias, Sweet Peas and Gladioli)	1
84 Vase of mixed garden flowers for effect	
85 Vase or Group of flowers of the same type (excluding Roses, Dahlias, Sweet Peas and Gladioli) but of any variety	

Open Section	Classes 91-100
91 Sweet Peas - one or more variety	5
92 Gladiolus, single spike	1
93 Pinks or Carnations – stems of one or more variety	3
94 Best single bloom on show day (excluding Roses, Dahlias, Sweet Peas and Gladioli)	1
95 Vase of mixed annual flowers for effect	
96 Vase of mixed garden flowers for effect (must include biennial and/or perennial flowers; can include annual flowers)	
97 Vase or Group of flowers of the same type (excluding Roses, Dahlias, Sweet Peas and Gladioli) but of any variety	

HOUSE OR CONTAINER PLANTS

Class number+R=see rule 15.

Novice Section	Classes 101-105
101R Plant in bloom	1
102R Plant for foliage effect	1

Open Section	Classes 106-115
106R Fuchsia in flower	1
107R Begonia in flower	1
108R Pelargonium in flower	1
109R Any other plant in bloom	1
110R Plant for foliage effect	1
111R Cactus or Succulent	1
112R Alpine, any variety	1
113R Patio Plants in their container	1
Hanging Baskets	See box below
115R Bonsai	1

Members-only Competition for Hanging Baskets

NEW

In the weeks before the Show we will be judging hanging baskets in situ at members' homes. Results will be announced on Show Day. This competition does not count towards points for show trophies.
Details and application forms will be delivered to members.

FLORAL ART - "THE SUMMER GARDEN"

There will be comments from the judges on the exhibits unless otherwise requested by the exhibitor.

These comments are meant to be constructive and helpful.

Space allowed 60 cms x 60 cms for exhibits 116-124.

Exhibits are staged against a black background provided by the Society.

Exhibitors may use home grown or bought materials in their exhibits.

Class number+R=see rule 15.

Novice Section

Classes 116-120

116R **The Cottage Garden** An arrangement using fresh plant material. 1

Open Section

Classes 121-130

121R **The Miniature Garden** An arrangement of flowers and/or plant material not exceeding 10cm in width, depth & height 1

122R **The Rose Garden** An arrangement using predominantly roses 1

123R **The Herb Garden** An arrangement using fresh herbs. 1

124R **The Herbaceous Border** An arrangement in a basket 1

COOKERY - Recipe for Class 149

GINGER CAKE

Ingredients

7 tblsp Oil	8oz (200g) Plain Flour
4oz (100g) Brown Sugar	½ teasp. Bicarbonate of Soda
4oz (100g) Syrup	½ teasp Salt
4oz (100g) Treacle	3 teasp Ground Ginger
1/4pt.(125ml) milk	1 Egg

Method:

- 1 Light oven, 160°C or 350°F or Gas Mark 3
- 2 Grease & Line a 7" (18cm) sq. tin
- 3 Measure the oil, syrup, treacle, sugar and milk into a pan.
- 4 Put on a low heat and melt slowly. DO NOT BOIL.
- 5 Put onto a pan stand and leave to cool.
- 6 Sieve the flour, bicarbonate of soda, salt and ginger into a bowl.
- 7 Pour the cooled melted mixture into the bowl.
- 8 Add the egg & mix well together.
- 9 When smooth & glossy pour into the greased tin. Bake on the middle shelf or lower shelf for 1¼ hours
- 10 Allow to cool for 10-15 minutes before carefully removing from tin.
- 11 Store in an airtight tin for 2 – 3 days before eating. It will then be moist and sticky, rather than crisp and dry.

COOKERY

All items to be home made by the exhibitor

All items in classes 131-165 are subject to opening or cutting and tasting by the judge

NB see rule15.

Novice Section

Classes 131-145

131	Shortbread biscuits	4
132	Bread Rolls	4
133	Victoria sandwich (2 eggs)	1
134	Fruit scones (must use fluted cutter)	4
135	Fruit pie 20 cms / 8" maximum (fresh fruit)	1
136	Jar of jam (made from fresh fruit)	1
137	Jar of jelly (made from fresh fruit)	1
138	Jar of marmalade (made from fresh fruit)	1

Open Section

Classes 146-165

146	White loaf of bread	1
147	Brown loaf of bread	1
148	Speciality bread (type to be stated by exhibitor)	1
149	Ginger Cake (see Page 11 for recipe, and Rule 10)	1
150	Victoria sandwich (2 eggs)	1
151	Fruit scones (must use fluted cutter)	6
152	Cherry Cake	1
153	Fruit flapjack	6
154	Shortbread biscuits	6
155	Fruit pie 20cms / 8" maximum (any fruit)	1
156	Jar of jam (made from fresh fruit)	1
157	Jar of marmalade (made from fresh fruit)	1
158	Jar of lemon cheese	1
159	Jar of jelly	1
160	Jar of chutney or pickle	1

EGGS

Staged on plates and sand provided by the Society

Open Section

Classes 166-170

166	Hen eggs – brown	3
167	Hen eggs – white	3
168	Bantam eggs - same colour	3
169	Eggs any colour – not in Classes 166-168	3

PHOTOGRAPHY, ART AND CRAFTS

Must be the exhibitor's own work

Class number+R=see rule15.

Novice Section

Classes 171-175

171R	Painting or sketch in any medium	1
172R	Miscellaneous textile item	1
173R	Miscellaneous non-textile item (excluding Class 171)	1

Open Section

Classes 176-190

Restricted to exhibits which have not won first prize in any previous shows

Art

176R	Painting or sketch in any medium	1
------	----------------------------------	---

Craft

177R	Hand knitted	1
178R	Hand embroidered	1
179R	Soft toy	1
180R	Miscellaneous textile item not in Classes 177-179	1
181R	Craft item in hard material	1
182R	Decoupage card	1
183R	Any other craft item not in Classes 177-182	1

Photography

All entries must be mounted on plain white card.

The longest side of the photograph should not exceed 180mm.

The mount should not exceed 155mm x 200mm.

Titles may be added.

184R	A close-up photograph of a plant or flower	1
185R	A photograph of a garden scene	1
186R	A photograph of a horticultural pest or disease	1

For more information about the Society, go to:

www.edgworth-horticultural-society.co.uk

or contact:

			Email
Chairman	Barry Scanlon	01204 853152	chairman@edgworth-horticultural-society.co.uk
Treasurer	Phil Broughton	01204 300541	treasurer@edgworth-horticultural-society.co.uk
Secretary	Irene Spencer	01204 307897	secretary@edgworth-horticultural-society.co.uk
Events	Pat Whalley	01204 853444	events@edgworth-horticultural-society.co.uk
Membership	Norman Woffenden	01204 308081	membership@edgworth-horticultural-society.co.uk
Annual Show	David Spencer	01204 307897	show@edgworth-horticultural-society.co.uk
Outings			outing@edgworth-horticultural-society.co.uk

Junior Craft

Under 6

- 226R A painted boiled egg
227R Any other craft item

Classes 226-230

1
1

6-11 years

- 231R A decorated boiled egg
232R Any other craft item

Classes 231-235

1

12-15 years

- 236R A painted pebble
237R Any other craft item

Classes 236-240

1
1

Junior Photography

All entries must be mounted on plain white card.
The longest side of the photograph should not exceed 180mm.
The mount should not exceed 155mm x 200mm.
Titles may be added.

Under 6

- 241R A photograph of a flower or plant

Classes 241-245

1 

6-11 years

- 246R A photograph of a flower or plant

Classes 246-250

1 

12-15 years

- 251R A photograph on a horticultural theme

Classes 251-255

1 

Junior Gardening

11 years and under

- 261 Pot of quick growing salad 1 or more varieties
262 Pot of radishes 1 or more varieties

Classes 261-270

1 
1 

12-15

- 271 Pot of quick growing salad 1 or more varieties
272 Pot of radishes 1 or more varieties

Classes 271-280

1 
1 

RULES

1. The Institute will be open to accept completed entry forms 7.30 p.m. - 8.20 p.m. on the Friday before the Show, and on the day of the Show 9.00 a.m. – 11.40 a.m. **Entry forms will not be accepted after 11.40 a.m. on the day of the Show. Staging of exhibits must be completed by 8.30 pm on the Friday or by 11.50 a.m. on the day of the Show. See Page 3 for more details.**
2. Exhibitors will be allowed to submit any number of entries. An exhibit is as described in the schedule, and in the crafts section 'an exhibit' means either a single item or, where more appropriate, a group of not more than 3 related items.
3. Any exhibit, once staged, must not be substituted.
4. **Judging commences promptly at 12 noon on the Saturday.** Only Judges and Show officials may be present.
5. **The Judge's decision will be final.**
6. Any complaint or objection must be lodged in writing with the Chairman no later than 3.30 p.m. on the day of the Show, together with a deposit of £1, the same to be refunded if the complaint or objection be proved; if not the deposit is forfeited.
7. All Horticultural exhibits must have been grown by the exhibitor, except for houseplants where the exhibit must have been the exhibitor's exclusive property for at least three months prior to the Show. In all other classes the exhibit must have been prepared by the entrant.
8. Vegetables to be shown with roots and tops where appropriate, and in accordance with the Schedule.
9. Vases will be supplied for flowers. They must be used in all classes 46-100, except 85 and 97 where other containers may be substituted for small displays. Exhibitors are strongly encouraged to use the packing paper supplied by the Society.
10. All cakes in Class No. 149 must be made from the recipe printed in the Schedule.
11. Junior exhibitors pay a reduced entry fee unless entering an adult class, in which case the normal entry fee will be charged.
12. A Novice is a person who has not won a First prize in the Novice or Open classes for that type of exhibit.
13. A Novice may only win the Bibby Cup once.
14. Trophies will be held for 12 months only, and winners of trophies will be required to return them to the Society in good condition at least a week before the next Annual Show.
15. All exhibits **except where classes are marked in the schedule with the letter R** become the property of the Society and will be sold, the proceeds going to Society funds. Any exhibitor may have a non-R exhibit returned on payment of an additional 30p per exhibit, such payment to be made to the Entry Stewards no later than 11.40 am on Show Day. The additional 30p is not to be paid on exhibits already marked as 'R' in the Schedule.
Exhibits to be returned will be indicated by a red card.
16. No responsibility will be undertaken for damage done to exhibits, etc, nor will the Society be responsible for the loss of any article, but the Society will seek to ensure that reasonable care will be taken of them and Stewards will be present to oversee the displays.
17. Exhibits are not to be removed before the presentation of prizes at 4.15 p.m. Prize cards are not to be removed until at least 4.00 p.m., and all cards remaining at 4.10 p.m. will be collected by the Stewards for safekeeping until claimed by the winner.
18. Any exhibitor who, in the opinion of the committee, is guilty of any fraudulent practice shall forfeit all prizes.

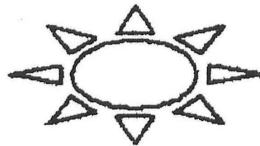
BRADSHAW BOILER & HEATING SERVICES LTD

624 TONGE MOOR RD, BOLTON

TEL: 01204 300155

- GAS AND OIL BOILER SERVICE AND REPAIR
- GAS FIRES SERVICED AND REPAIRED
- CENTRAL HEATING INSTALLATION
- DOMESTIC AND INDUSTRIAL
- COURTEOUS AND PROMPT SERVICE

BOOK YOUR SUMMER SERVICE NOW



SNIFS

SPECIAL NEEDS UNDER
FIVES SUPPORT

**Could you spare the time to give
support to a child with Special Needs
in a pre-school setting in your area ?**

Could you help for 2-4 hours per week ?

For further information please contact

Lynn/Niki **01204 338211**

(All volunteer work offered will be subject to references & CRB Disclosure)

Registered Charity No. 1113527

Here for ... Health & Beauty

Is there anything more satisfying or relaxing than a wonderful massage -well yes there is now!!!.

Calm Beauty Salon in Edgworth have just introduced to their already comprehensive treatment range a new two therapist massage for double delight!!!.

The beautiful South Pacific Island of Fiji has enabled them to offer their clients the classic two-therapist massage. This is an amazing opportunity to sample the unique blend of Fijian, Balinese, Shiatsu, Thai, Swedish and Hawaiiin Lomi Lomi massage techniques all in one.

This full body massage (£69.50 per hour) is a truly amazing experience where two therapists work simultaneously and in synchrony. The therapists mirror their actions with choreographed massage movements resulting in the ultimate massage experience.



If massage is not for you then try one of their other popular treatments, with the sun starting to break through more often and the temperature rising we are all starting to shed those layers and what better way to lift you out of the long winter months than with a new Solaris spray tan or fabulous summery manicure.

Whatever your preference Sue and her team at Calm will give you a warm welcome and discuss your needs and select a treatment that gives you that boost as we enter into the summer months.



BEAUTY SALON

74 Wellington Road, Turton, Edgworth Bolton
Tel: 01204 853528 Mobile: 077333 06401
Email: info@calmbeautysalon.co.uk

Enjoy a warm atmosphere with a high degree of personal care at Calm. All rooms are private and we offer free professional advice whatever your needs.



- Espa face and body treatments
 - CACI Ultimate
 - Manicures & pedicures
 - Spray tans
 - Acrylic & Gel nails
 - Waxing & tinting
 - Massage & relaxation
 - Men's treatments
 - Cosmetic surgery clinic
 - Semi permanent make-up
 - 3D eyelashes
 - Make overs
 - Bare Escentuals Mineral make up
- Plus lots more treatments

Get ready for summer !!
Minx toes includes mini manicure
or pedicure £28
Semi permanent nail polish £20
New Solaris spray tan £15

Open Mondays by appointment only
Tues 9-5, Wed/Thurs 9-8, Fri 9-5, Sat 9-3

www.calmbeautysalon.co.uk



South African Wines



Red white or rosé
 Still or sparkling
 Sweet or dry
 Wines for all pockets

visit our website

www.capewines-bolton.co.uk

Contact us at 01204 308081

or email at woffendenwines@btinternet.com

We make a Show Offer of a sampler case to be delivered to your home free of charge.

3 bottles each of

- Rooiberg Sauvignon Blanc,
- De Waal young vines Chenin Blanc,
- Wild Rush Cabernet Sauvignon/Tinta barocca,
- Stonedale Shiraz

at a special show price of £66.

Order Form.

Name.....

Address.....

.....

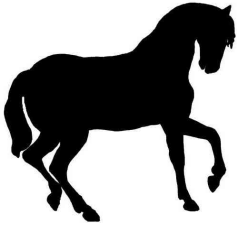
Post code.....Tel Number.....

Number of cases required.....

Payment by cash, credit card or cheque

...

To Woffenden Wines,
 103 Chapelton Rd
 Bromley Cross
 Bolton BL7 9LZ
 Tel 01204 308081



Everything's Coming Up Roses



with

Genuine Well Rotted Horse Manure & Mulch

£1.50 per bag.

Free local delivery for 10 or more bags.

Members of the Horticultural Society can endorse the quality of this manure.



Mr Alan Bennet
Everything's Coming up Roses
28 Boleyn Court
Heywood
OL10 3AG

Established 30 yrs

01706 367264



Everyone deserves a
beautiful smile

You need no longer feel embarrassed
or worried about your teeth.
Again and again, a beautiful smile
can make a real difference to
people's lives.

Why wait to start smiling?

BRYCE WHITTLE

Cosmetic & Dental Implant Centre
202/204 Tonge Moor Road, Bolton 01204 521514

'Teeth to Die For'



HOLLAND
GARDENING CENTRE
FOR ALL YOUR GARDEN NEEDS

OPEN 7 DAYS



**SPRING BEDDING
PLUS 1000s OF
NEW SHRUBS, ALPINES
AND PERENNIALS**

**NEW!
EVERYTHING YOU
NEED TO
GROW YOUR OWN**

**HUNDREDS
OF GIFT IDEAS FOR ANY
OCCASION**

**FRIENDLY CAFÉ WITH
HOT FOOD
TO EAT IN
OR TAKE OUT**



**PLUS
FULL RANGE OF BIRD FEEDERS AND EQUIPMENT
FARM SHOP
AND MUCH MUCH MORE**

**HOLLAND GARDENING CENTRE
Darwen Road, Bromley Cross, BL7 9AB
Tel: 01204 301788**



Turton Tower Needs Volunteers

Want to develop new interests?
Want to widen your circle of friends?
Are you a student or retired?
Is History '*your bag*'?
Do you have any hours to spare
weekdays or weekends?

If you answer yes to any of the above, why not
Become a Volunteer

We are currently seeking volunteers to fill the following roles:

Visitor Reception/Shop Stewards

- to welcome visitors and assist with ticket sales and merchandising in the shop.

Period Room Stewards

- to enhance the experience we can offer visitors through supervising a number of period rooms.

For further information please contact:
Tower Manager – on 01204 852203
email fiona.jenkins@blackburn.gov.uk

Or To Become A Friend of Turton Tower
please contact 01204 308081



BRUSHSTROKES

PICTURE FRAMERS OF DISTINCTION

Framing service

Gallery

Art material supplies

Tel: 0845 347 4056



220 Chorley Old Road

Bolton

BL1 3BW

www.brushstrokespictureframing.co.uk

DRESSMAKING
CLOTHING ALTERATIONS
AND REPAIRS

FOR MORE INFORMATION
CONTACT JANET HOLDEN

TEL: 01204 852982
MOBILE: 07929 621918



The Complete Legal Service



- **Personal Injuries**

Road Traffic Accidents, Accidents At Work, Slips & Trips, Industrial Diseases

- **Wills & Probate**

Wills, Probates, Advice On Inheritance Tax, Lasting Powers Of Attorney, Lifetime Planning, Court Of Protection Applications

- **Conveyancing**

Equity Release, Commercial Landlord & Tenant, Rights Of Way, Adverse Possession & Boundary Disputes, Buying And Selling Houses, Land Ownership & Squatters Rights, Business Sales & Purchases

- **Family Law**

Cohabitation Disputes, Civil Partnerships, Domestic Violence, Financial Matters, Residence & Contact, Social Services Involvement

- **Criminal Defence**

Arrested?, Theft, Assault, Drugs, Driving Offences, Serious Crimes, Conspiracy, Deceptions & Fraud Etc. We Can Help.



www.afglaw.co.uk



INVESTOR IN PEOPLE

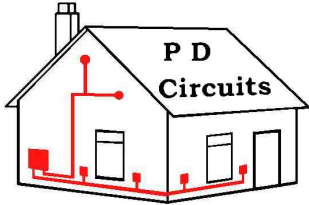
Lexcel

The Law Society's
Prestigious Award
For Excellence

01204 377600

www.afglaw.co.uk email: info@afglaw.co.uk

20 Mawdsley St, Bolton BL1 1LE



Domestic Electrician
Local to Turton and Edgworth
Small Jobs Specialist

Light fitting or socket to a full rewire.
Inspection and testing surveys

City & Guilds Qualified. Part P approved



Professional, Reliable, Prompt Service

Phil Dustin, Wellington Rd, Turton BL7 0EF

Call **Tel: 01204 853486**
Mobile: 0779 0738176



**Quiet Rural Setting, No Dogs Boarded,
Heated Beds & Outdoor Runs To All Pens,
Purpose Built.**

ART NOIRE Creative Landscaping



Bringing your Garden to Life

We make a difference and add value to your home

- **Weeding, pruning and clearance**
- **Front garden makeovers**
- **Ponds and water features**
- **Patios and traditional stone walling**
- **Child and pet friendly spaces**
- **Pergolas, arches and fencing**
- **Rockerries and planting schemes**
- **'Grow your Own' vegetable plots**

No job is too large or small. All our work is guaranteed and we include excellent aftercare.

For a cost effective service that's second to none, please contact
Alison or Anne:

Tel: 01204 598492

Mobile: 07738 515846

Email: art@artnoire.net

Website: www.artnoire.net

*Astley
Bank*

**Hotel Restaurant
& Conference Centre**

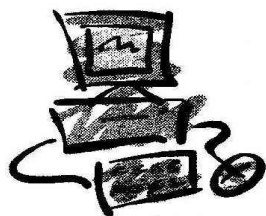
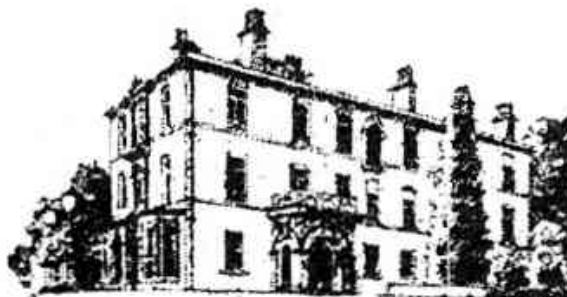
Bolton Road, Darwen, Lancashire, BB3 2QB

Tel: 01254 777700

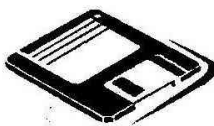
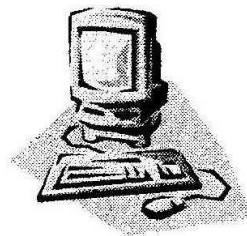
www.astleybank.co.uk

Restaurant open daily
Weddings, Christenings, Funerals and all occasions
The finest food & friendly service
in a magnificent setting

*A Hidden Gem
nestled in open countryside
off the A666
South of Darwen*



IDC COMPUTERS



NEW SYSTEMS • RE-FURBISHED SYSTEMS

All Internet Ready

also

UPGRADES • REPAIRS

SERVICING • INSTALLATIONS etc

Ian Whittaker

YOUR LOCAL COMPUTER SUPPLIER

Established 13 Years

TEL: 01204 853567 – Chapelton Village

COOKERY SHOW TIPS

Cakes (sponge)

These should be a light golden brown, well risen, definitely no cracks and must easily cut and not crumble.

Scones

No flour spots and those lovely burnt raisins/currants are sadly outlawed if you want winning scones.

Jams & Jellies etc.

The judge will be looking for well set jellies and jams, in clean jars, neatly covered with a wax disc, sealed, clearly labelled with the type and date of cooking. Jellies should be clear.

Breads

Definitely no cracks or bumps (you know the sort of bumps, the ones you just want to pick off and eat!). Moist, tender and soft centred, and not tasting of yeast.

Tarts and Pies

Pastry should be golden brown, edges even and unbroken and well sealed (none of that lovely fruit juice seeping into the pastry). Pastry for sweet dishes should be cut with a fluted cutter!

The Society will provide doylies for the display of biscuits and cakes.

Edgworth and District Horticultural Society Programme for the rest of 2011	
Saturday September 10 th	Autumn Outing to the gardens at Ripley Castle. The castle terrace gives fantastic views over the lake and deer garden. Ripley Castle has a collection of specimen trees from around the world, huge herbaceous borders and hot houses full of tropical plants, ferns and cacti. The walled kitchen garden contains herbs and rare vegetables.
Wednesday September 21 st	The Eclectic Victorian Garden (Marilyn Elm, Thirsk) Marilyn is a course leader for the courses Diploma & Certificate in Garden Art & Design which are taught at RHS Harlow Carr in Harrogate. She has a special interest in Garden History and is a founder member of The Yorkshire Gardens Trust.
Wednesday October 19 th	Growing with Nature (Alan Schofield, Pilling) Alan is a crusader for organic produce and the local market. He has been a prominent member of the Soil Association and is on the steering group for the Soil Association Centre at Myerscough College. He runs an organic vegetable and fruit box scheme and organises courses on various gardening activities.
Wednesday November 16 th	AGM, Seed Swap and Social Evening with hot pie supper This meeting begins at 7.30 p.m. After A.G.M. business we have a social evening with potato pie supper and a seed swap between members.

TIPS FOR EXHIBITING FLOWERS, FRUIT and VEGETABLES

If you've never exhibited before, we've a few tips on preparing for the show. For in-depth instructions on showing horticultural produce, the definitive text is *The Horticultural Show Handbook*, published by the Royal Horticultural Society. You can find a list of the points allocation for vegetables on our website at

<http://www.edgworth-horticultural-society.co.uk/pdf/judging-points-veg.pdf>

Read the Schedule

This may sound obvious, but a number of entries are disallowed by the judges each year because they are '*Not According to Schedule*'. Pay special attention to **how many** items you have to submit, the **minimum/maximum size** if given, and any **specific preparation or display instructions**.

Be careful in your picking and preparation of flowers, fruit and vegetables.

Allow enough time to prepare your exhibits. It takes time to dig up and clean root vegetables, or to pick fruit and flowers. However, don't pick them too far in advance – the judge will take freshness and condition into account when awarding points, often cutting the exhibits open to check for condition.

Handle the fruit and vegetables as little as possible in order not to destroy the 'bloom' that fruit such as plums carry. Pick currants with the strigs intact, and leave the stalks on other fruit. Check the schedule for what you have to leave on vegetables.

Root vegetables should be washed carefully – don't use a scrubbing brush as this will damage the skin. Trim the tops as specified in the schedule (usually 75mm / 3"). Note the schedule states that onion tops should be tied.

If rain is forecast, pick flowers in advance or cover them to prevent damage. Remove damaged flowers and broken or discoloured leaves.

Select appropriate specimens

Particularly in fruit and vegetables, the judges will be looking for exhibits that are similar in size and appearance. Five medium sized beans or potatoes of similar appearance will score over a mixed group of big and small ones. Similarly with flowers: try to choose ones of even size and quality.

Think about presentation

The benches will be marked out with the class numbers, and you will be given an entry card to lay next to your exhibit.

Lay out the fruit and vegetables neatly on the bench, preferably on a paper towel or paper plate – though remember that in a small show like ours, it may be necessary for the stewards to move your exhibit to make room, so don't make the arrangement too elaborate. The Society provides the vases and packing paper for the staging of flowers.

Does looking at all
the cakes make you
feel hungry?

Try the EHS
refreshments in the
Institute café - open
from 2.30 p.m.

For information about the Society
Programme – Trips – Holidays
Go to
www.edgworth-horticultural-society.co.uk

Visit the Plant Stall and buy
quality plants at reasonable
prices. All profits go to the
Society.